



Engine	Cummins QSL
Rated Power	214 kW (286 hp / 291 ps) @ 2,100 rpm
Net Power	202 kW (270 hp / 274 ps) @ 2,100 rpm
Maximum Dig Depth	7,340 mm
Standard Bucket Capacity	1.6 m ³
Operating Weight	35,000~35,600 kg

936E EXCAVATOR

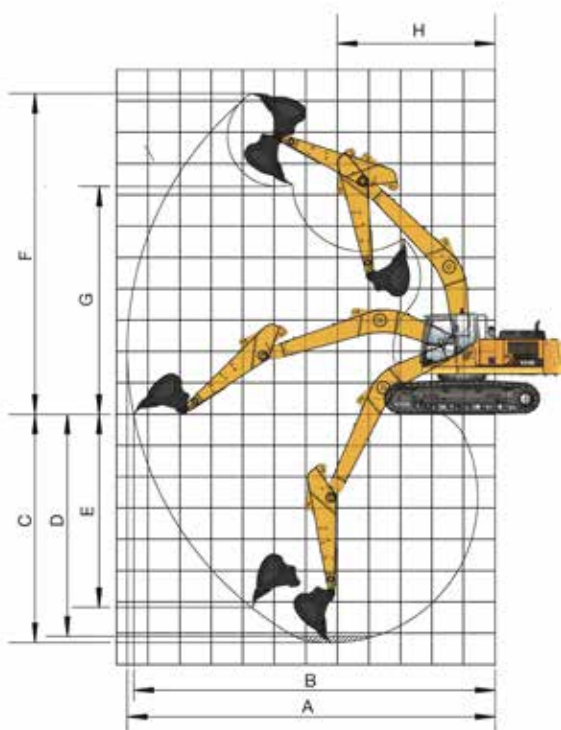
936E SPECIFICATIONS >>>

ENGINE

Emission Regulation	Tier 3 / Stage IIIA
Make	Cummins
Model	QSL
Rated Power	214 kW (286 hp / 291 ps) @ 2,100 rpm
Net Power	202 kW (270 hp / 274 ps) @ 2,100 rpm
Peak Torque	1,343 N·m @ 1,600 rpm
Number of Cylinders	6
Displacement	8.9 L

UNDERCARRIAGE

Shoe Width	600 mm
Number of Shoes per Side	48
Number of Bottom Rollers per Side	9
Number of Upper Rollers per Side	2



BOOM & ARM

Boom Length	6,400 mm
Arm Length	3,200 mm

BUCKET PERFORMANCE

Std. Bucket Heaped Capacity (Referenced)	1.6 m³
Min. Heaped Capacity of Bucket Options	1.6 m³
Max. Heaped Capacity of Bucket Options	1.9 m³

TRACK DRIVE

Maximum Travel Speed	5.5 km/h
Drawbar Pull	320 kN

SERVICE CAPACITIES

Fuel Tank	620 L
Engine Oil	30 L
Cooling System	37 L
Hydraulic Reservoir	240 L
Hydraulic System Total	450 L

HYDRAULIC SYSTEM

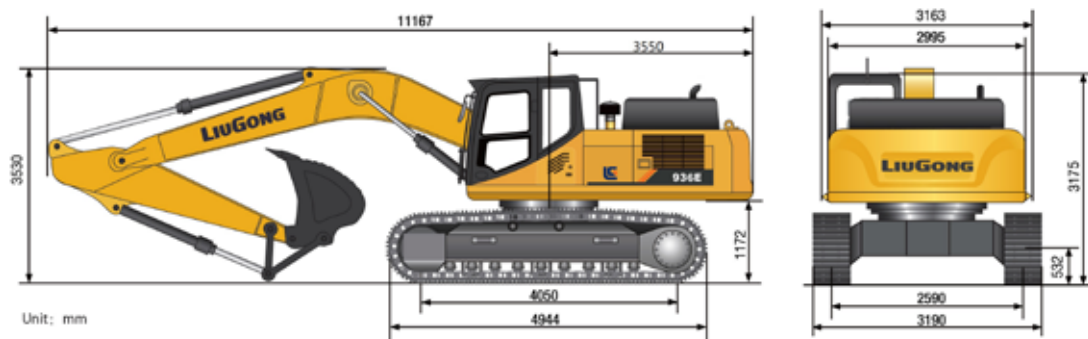
Main Pumps Total Flow	600 L/min
Relief Pressure, main	34.3 MPa
Relief Pressure, boost	37.3 MPa

SWING SYSTEM

Swing Speed	10 rpm
-------------	--------

WORKING RANGE

A. Max. Digging Reach	11,100 mm
B. Max. Digging Reach on Ground	10,900 mm
C. Max. Digging Depth	7,340 mm
D. Max. Digging Depth, 2.44 m (8') level	7,180 mm
E. Max. Vertical Wall Digging Depth	6,460 mm
F. Max. Cutting Height	10,240 mm
G. Max. Dumping Height	7,160 mm
H. Min. Front Swing Radius	4,465 mm
Bucket Digging Force (ISO)	252 kN
Arm Digging Force (ISO)	185 kN
Bucket Capacity	1.6 m³



Guangxi Liugong Machinery Co., Ltd.

No. 1 Liutai Road, Liuzhou, Guangxi 545007, PR China
T: +86 772 3886124 E: overseas@liugong.com
www.liugong.com

Specifications and designs are subject to change without notice. Machines shown may include optional equipment. Liugong standard and optional equipment may vary from region to region. Please consult your Liugong dealer for information specific to your area. Engine power kW is converted to horsepower (1 kW=1.3596 ps and 1 kW=1.3410 hp) in this file.

12/2020 Designed by LiuGong