



Engine	Cummins QSX15
Rated Power	373 kW (500 hp / 507 ps) @ 1,800 rpm
Net Power	357 kW (479 hp / 485 ps) @ 1,800 rpm
Maximum Dig Depth	7,180 mm
Standard Bucket Capacity	4.3 m ³
Operating Weight	70,500~70,960 kg

970E EXCAVATOR

970E SPECIFICATIONS >>>

ENGINE

Emission Regulation	Tier3 / Stage IIIA
Manufacturer	Cummins
Model	QSX15
Rated Power	373 kW (500 hp / 507 ps) @ 1,800 rpm
Net Power	357 kW (479 hp / 485 ps) @ 1,800 rpm
Peak Torque	2,363 N·m @ 1,400 rpm
Number of Cylinders	6
Displacement	15 L

UNDERCARRIAGE

Shoe Width	650 mm
Number of Shoes per Side	48
Number of Upper Rollers per Side	3
Number of Bottom Rollers per Side	8

BOOM & ARM

Boom Length	6,600 mm
Arm Length	2,900 mm

BUCKET PERFORMANCE

Std. Bucket Heaped Capacity (Referenced)	4.3 m ³
Min. Heaped Capacity of Bucket Options	4.0 m ³
Max. Heaped Capacity of Bucket Options	5.2 m ³

TRACK DRIVE

Maximum Travel Speed	4.4 km/h
Drawbar Pull	460 kN

SERVICE CAPACITIES

Fuel Tank	900 L
Engine Oil	46 L
Cooling System	72 L
Hydraulic Reservoir	360 L
Hydraulic System Total	680 L

HYDRAULIC SYSTEM

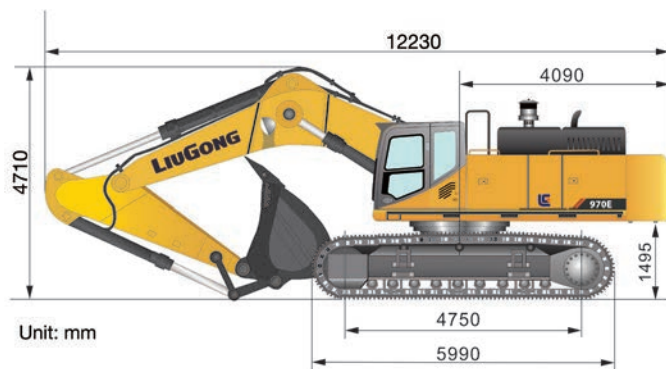
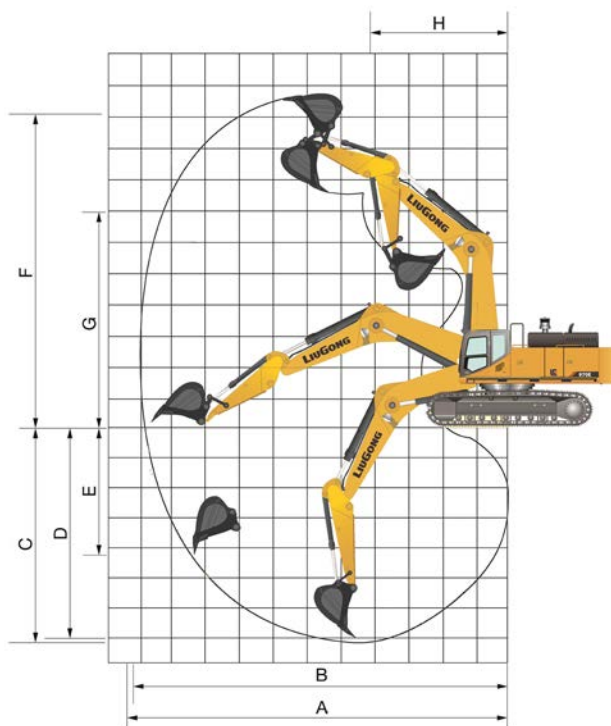
Main Pumps Total Flow	900 L/min
Relief Pressure, main	34.3 MPa
Relief Pressure, boost	37.3 MPa

SWING SYSTEM

Swing Speed	6.8 rpm
-------------	---------

WORKING RANGE

A. Max. Digging Reach	11,450 mm
B. Max. Digging Reach on Ground	11,170 mm
C. Max. Digging Depth	7,180 mm
D. Max. Digging Depth, 2.44 m (8') level	7,030 mm
E. Max. Vertical Wall Digging Depth	4,070 mm
F. Max. Cutting Height	10,950 mm
G. Max. Dumping Height	7,030 mm
H. Min. Front Swing Radius	4,900 mm
Bucket Digging Force (ISO)	376 kN
Arm Digging Force (ISO)	327 kN



Guangxi Liugong Machinery Co., Ltd.

No. 1 Liutai Road, Liuzhou, Guangxi 545007, PR China
T: +86 772 3886124 E: overseas@liugong.com
www.liugong.com

Specifications and designs are subject to change without notice. Machines shown may include optional equipment. Liugong standard and optional equipment may vary from region to region. Please consult your Liugong dealer for information specific to your area. Engine power kW is converted to horsepower (1 kW=1.3596 ps and 1 kW=1.3410 hp) in this file.

01/2021 Designed by Liugong
Replace the previous versions of 06/2019